

# BAKERS HOUSE

THE CAUSEWAY, MARLOW, BUCKINGHAMSHIRE, SL7 1NF



RESTAURANT / CAFÉ / RETAIL  
TO LET

1,428 - 7,436  
SQ FT



Flexible accommodation and  
multiple layouts available





Computer Generated Image

# BE A PART OF MARLOW'S VIBRANT FUTURE

## OVERVIEW

Formerly home to Burgers of Marlow, the much-loved artisan bakery that served the town for generations, this iconic Grade II listed building is being sensitively refurbished. Rich in local history, it offers a rare opportunity to create a standout destination within one of Marlow's most recognisable landmark buildings.

The property forms an important gateway to the wider Marlow retail estate owned by Sorbon Estates, the town's largest commercial landlord. For more than 50 years, Sorbon Estates has played a central role in shaping Marlow's high street, helping to establish it as one of the UK's most desirable shopping and dining destinations.

As long-term investors, Sorbon Estates is focused on stewardship and quality, ensuring the town continues to evolve while retaining its distinctive character. Its selective and strategic approach prioritises a carefully curated mix of high-quality independent operators and complementary national brands, creating a retail and leisure offer that feels aspirational and authentic.

Sorbon Estates works closely with operators and their agents as long-term partners, providing active asset management, intelligent design and flexibility to support exceptional concepts and lasting success.

Marlow is more than a location; it is a destination, and Sorbon Estates remains committed to its success for generations to come.



01



02

01 INSIDE THE BURGERS BAKERY  
02 BURGERS OPENED IN 1942

# MARLOW

## DESIRABLE MARKET TOWN

Marlow is one of the Thames Valley's most desirable market towns, often described as a London village thanks to its effortless blend of cosmopolitan energy, village charm and exceptional connectivity. Just 30 miles from central London and under an hour from the capital by road or rail, Marlow attracts both affluent local residents and a constant flow of visitors seeking premium retail, memorable dining and high-quality experiences.

## TOP CLASS DINING AND RETAIL

The town's historic high street is home to a carefully curated mix of best-in-class boutiques, celebrated restaurants and standout independents, supported by strong and consistent footfall. Marlow's reputation for excellence is reinforced by renowned Michelin-starred restaurateurs Tom Kerridge and Atul Kochhar, who both have more than one restaurant in the town.

Data sources:  
Visitor Insights 1st Jan - 31st Dec 2025  
Office for National Statistics (Census 2021)

## 12.2 MILLION VISITS

In 2025, an incredible 12.2 million visits were recorded in Marlow town centre. With a resident population of just 14,644, this figure highlights the town's magnetic appeal to visitors from across Buckinghamshire, London and beyond.

## 49% PRESTIGE POSITIONS

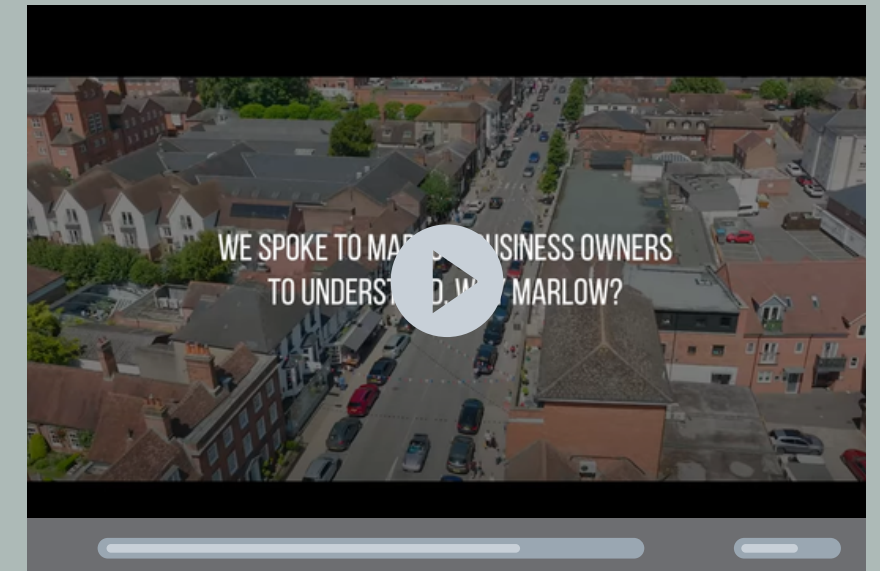
Marlow is home to one of the most desirable residential profiles in the region. The town boasts a high proportion of established families living in large detached homes, enjoying an upmarket lifestyle that aligns perfectly with premium retail and dining experiences.

## 64.5% IN MANAGERIAL POSITIONS

Marlow's talent pool is exceptional. 64.5% of residents are employed in managerial, professional, or technical roles, positions that typically command higher salaries and discretionary spending power. This figure is significantly above the national average of 46.5%.

**WE SPOKE TO MARLOW BUSINESS OWNERS TO UNDERSTAND**

**WHY MARLOW?**



Click image to play

## FEATURING

**Tom Kerridge:** The Hand and Flowers, The Coach, The Butcher's Tap and Grill

**Jo Tutchener-Sharp:** Scamp & Dude

**Jamie Vale:** Everyman Cinema



# LOCATION



-  Bakers House
-  Restaurant, Café, Takeaway, Bar or Pub
-  Retail, Leisure or Services Business



**BAKERS HOUSE**

**TO LET**



ALL SAINTS CHURCH

SINDHU SINDHU  
by Atul Kochhar

MACDONALD COMPLEAT ANGLER

RIVER THAMES

HIGGINSON PARK

P LISTON ROAD CAR PARK

FAIRFAX & FAVOR

GAIL'S

JIGSAW  
EST. 1970

megan's

MINT VELVET

PICCOLINO

THE IVY  
SINCE 1917

SCAMP & DUDE ⚡

MISSOMA

R. M. WILLIAMS  
EST. 1932, AUSTRALIA

THE WHITE COMPANY  
LONDON

OLIVER BONAS

SPACENK

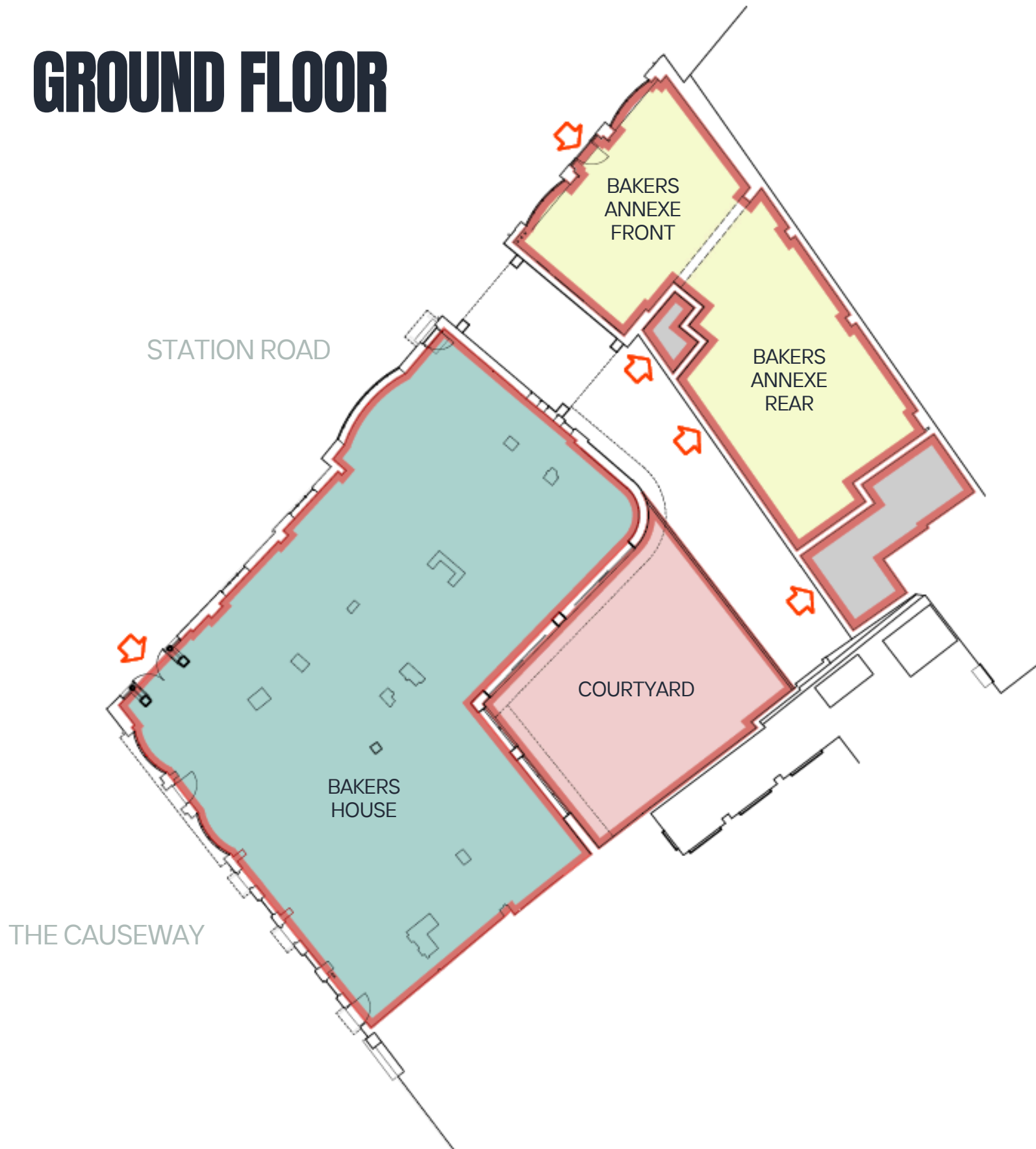
THE COACH

EVERYMAN

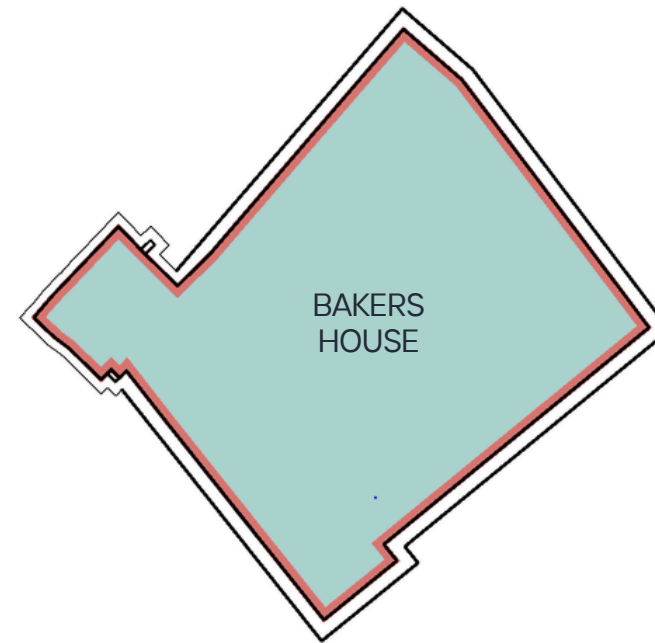
P POUND LANE CAR PARK

# FLOORPLANS

## GROUND FLOOR



## BASEMENT



**AVAILABLE  
IN PART, OR  
AS A WHOLE.**

### BAKERS HOUSE

	SQ FT
Restaurant/Retail/Café	3,437
Basement	1,614
Courtyard	957
<b>Total</b>	<b>6,008</b>

### BAKERS ANNEXE

	SQ FT
Front	566
Rear	862
<b>Total</b>	<b>1,428</b>

**Whole site total 7,436**

01



03



02



**01** COURTYARD VIEW  
**02** STATION ROAD VIEW  
**03** BAKERS ANNEXE VIEW

Computer Generated Images

# CONTACT US

BRUCE  
GILLINGHAM  
POLLARD

BRUCE  
GILLINGHAM  
POLLARD

**NAME**

TRACEY POLLARD

**PHONE**

07779 323 306

**EMAIL**

TRACEY@BRUCEGILLINGHAM POLLARD.COM

**NAME**

EMILY DUMBELL

**PHONE**

07805 259793

**EMAIL**

EMILY@BRUCEGILLINGHAM POLLARD.COM

Please note that all images including Computer Generated Images (CGI's) are for illustrative and indicative purposes only. Misrepresentation clause. These particulars are set out as a general outline only for the guidance of intending purchasers or lessees and do not constitute the whole or any part of an offer or contract. The information is compiled and given in good faith but without any responsibility whatsoever. Intending purchasers or tenants should not rely on them as statements or representations of fact. April 2026

FOLLOW US



OWNED AND MANAGED BY

**SORBON**  
ESTATES