



TOWN CENTRE FIRST FLOOR OFFICE TO LET

11-15 HIGH STREET
MARLOW, BUCKINGHAMSHIRE, SL7 1AU

Flexible leases available

431 sq ft (40 sq m)

TOWN CENTRE OFFICE TO LET

Size: 431 sq ft (40 sq m)

Rent: £11,000 +VAT per annum

Rateable Value: £7,300

Rates Payable: £3,153.60

Legal Fees: Each party to bear their own costs

This first floor office suite is accessible via a shared entrance. The open plan office features a small kitchenette.

The suite is available on a new lease direct from the landlord. Shorter, flexible leases available.



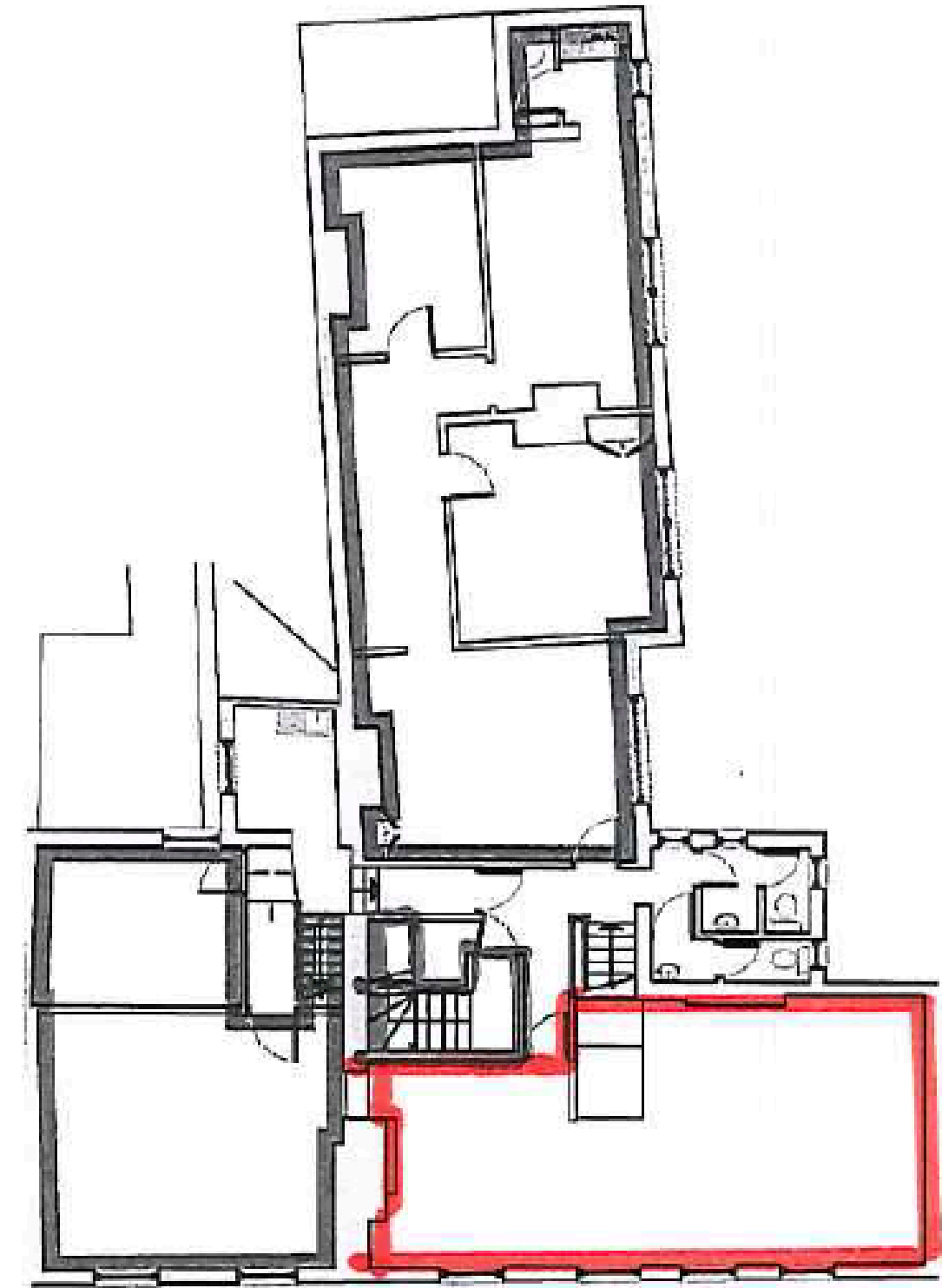
Kitchenette



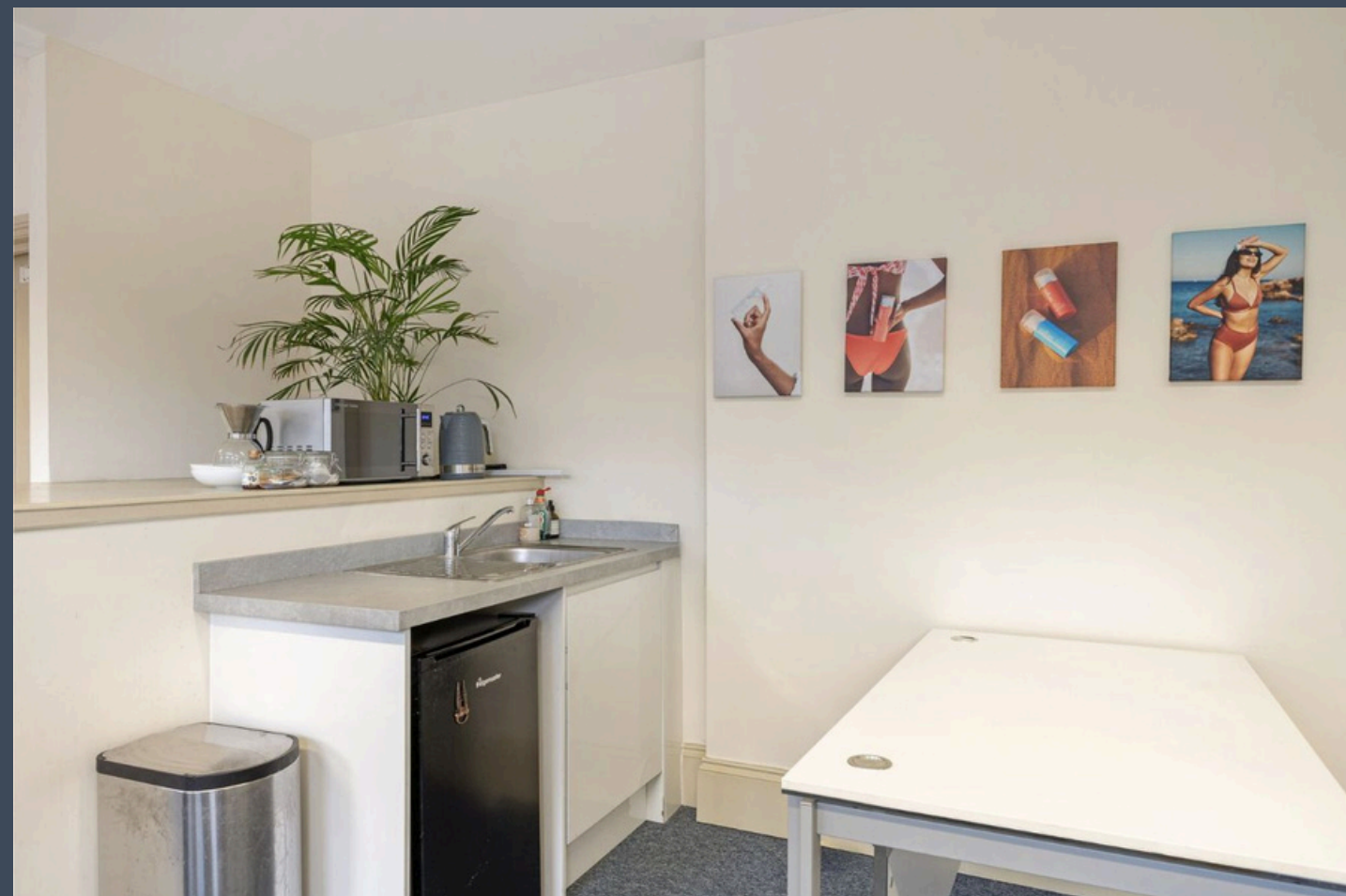
Carpet throughout



Entry phone system



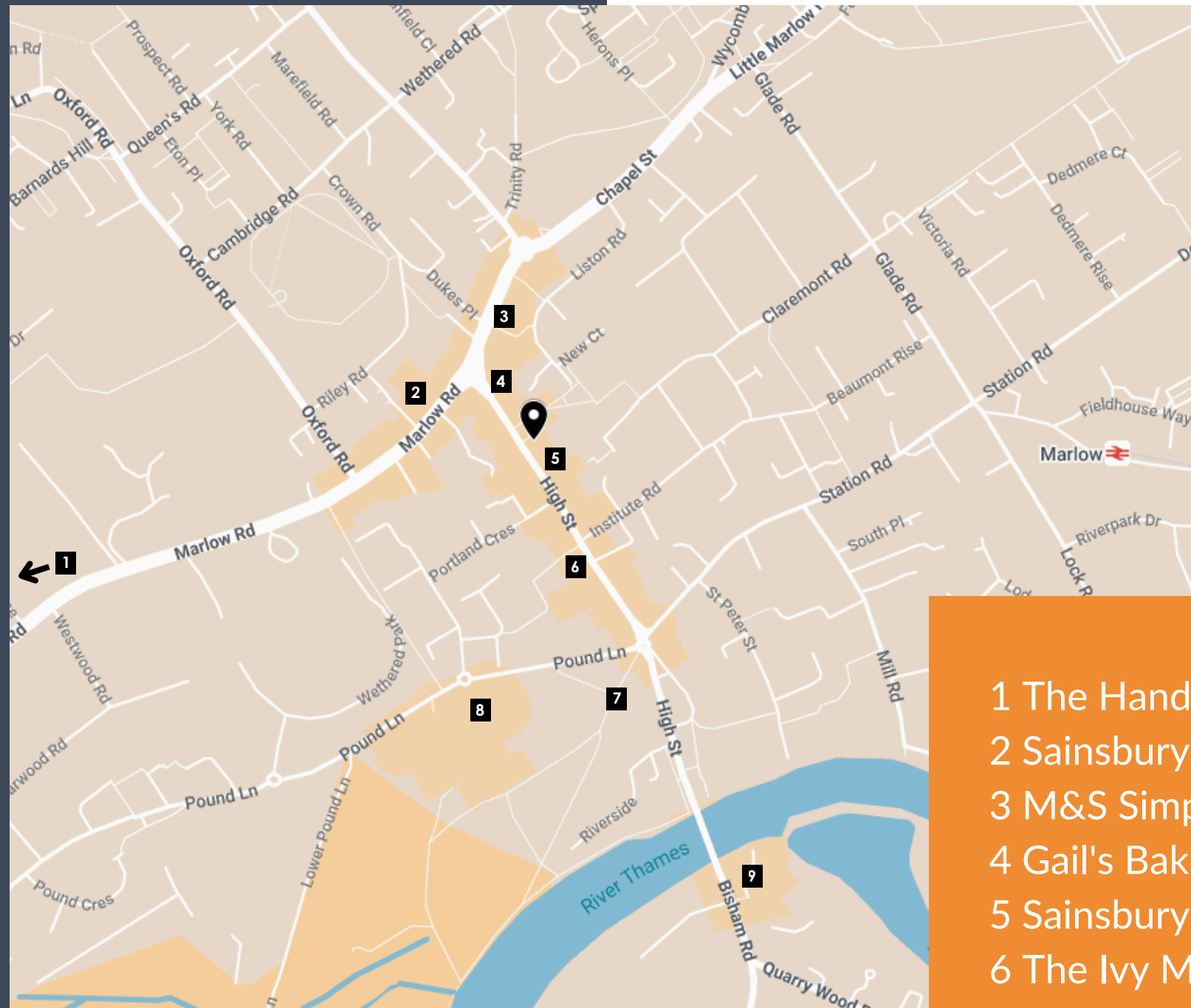
First floor



LOCATION

Marlow is an affluent riverside town, conveniently located with great access to both the M40 and M4 motorways via the A404.

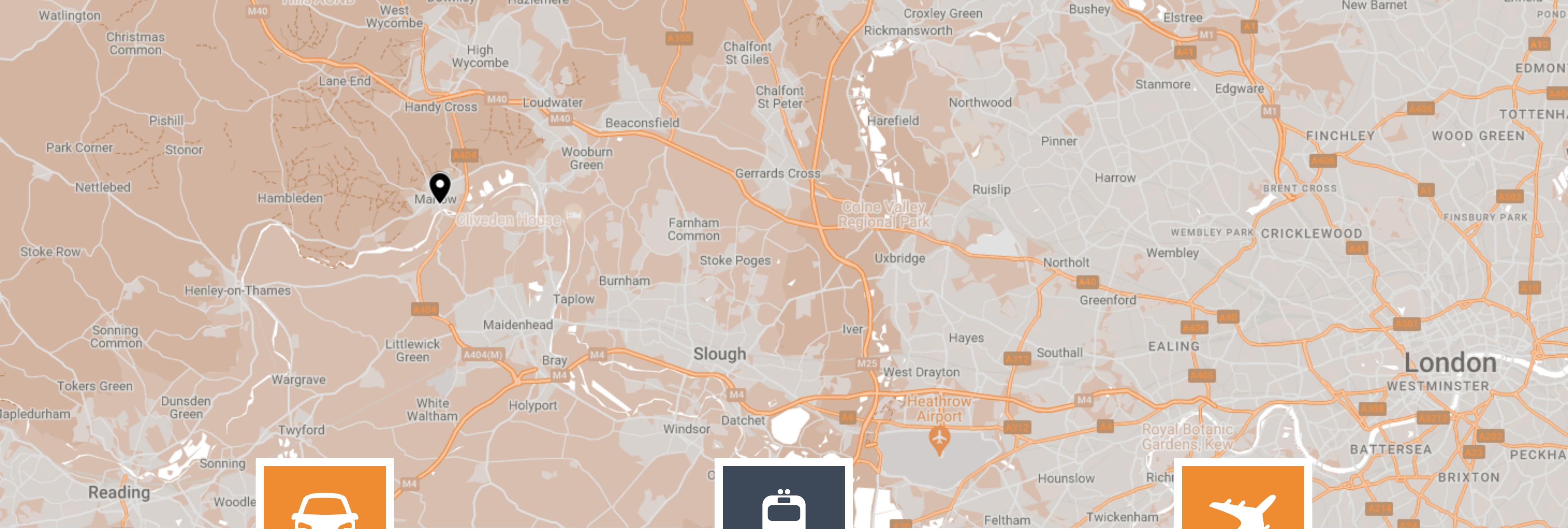
11-15 High Street benefits from being situated in the heart of the town centre close to all the amenities on offer including an eclectic mix of national and independent retailers, bars and restaurants. It is a short walk away from outside space at Higginson Park and the River Thames.



- 1 The Hand and Flowers
- 2 Sainsbury's
- 3 M&S Simply Food
- 4 Gail's Bakery
- 5 Sainsbury's Local
- 6 The Ivy Marlow Garden
- 7 Higginson Park
- 8 Court Garden Leisure Complex
- 9 Macdonald Compleat Angler



Source: Google Maps



CAR

3 MILES TO J4 OF M40

The A404 connects Marlow to J4 of the M40 in 3 miles and to J8/9 of the M4 in 6.8 miles.



TRAIN

0.5 MILES TO MARLOW STATION

Walk to Marlow station in 10 minutes with regular services to Maidenhead where you can access the Elizabeth Line into London.



AIRPORT

20.6 MILES TO HEATHROW AIRPORT

Worldwide connections within easy reach of Marlow.

GET IN TOUCH



MARK HARRIS

07598 450586

jmark@pagehardyharris.co.uk

SOPHIE HOLMES

07763 565056

sophie@pagehardyharris.co.uk

For further information or to arrange an inspection please contact our agent.

Misrepresentation clause. These particulars are set out as a general outline only for the guidance of intending purchasers or lessees and do not constitute the whole or any part of an offer or contract. The information is compiled and given in good faith but without any responsibility whatsoever. Intending purchasers or tenants should not rely on them as statements or representations of fact.

May 2026.

Please note that all images including Computer Generated Images (CGI's) are for illustrative and indicative purposes only and furniture is not included with the lease.

Owned and managed by:

SORBON
ESTATES