



# TOWN CENTRE FIRST FLOOR OFFICE TO LET

## CHILTERN HOUSE

DEAN STREET, MARLOW, BUCKS, SL7 3AA

1,035 sq ft (96.15 sq m)

## TOWN CENTRE OFFICE TO LET WITH PARKING

**Size:** 1,035 sq ft

**Rent:** £28,000 +VAT per annum

**Service charge:** £8,890 +VAT per annum

**Rateable Value:** To be confirmed

**Legal Fees:** Each party to bear their own costs

**EPC Rating:** B (34)

An excellent opportunity to lease a modern, well-specified office suite in Marlow town centre. The accommodation is located on the first floor of Chiltern House, offering a professional working environment with excellent accessibility and on-site parking.



Air-conditioning



Carpet throughout



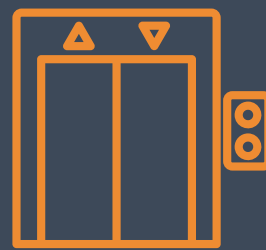
Kitchenette



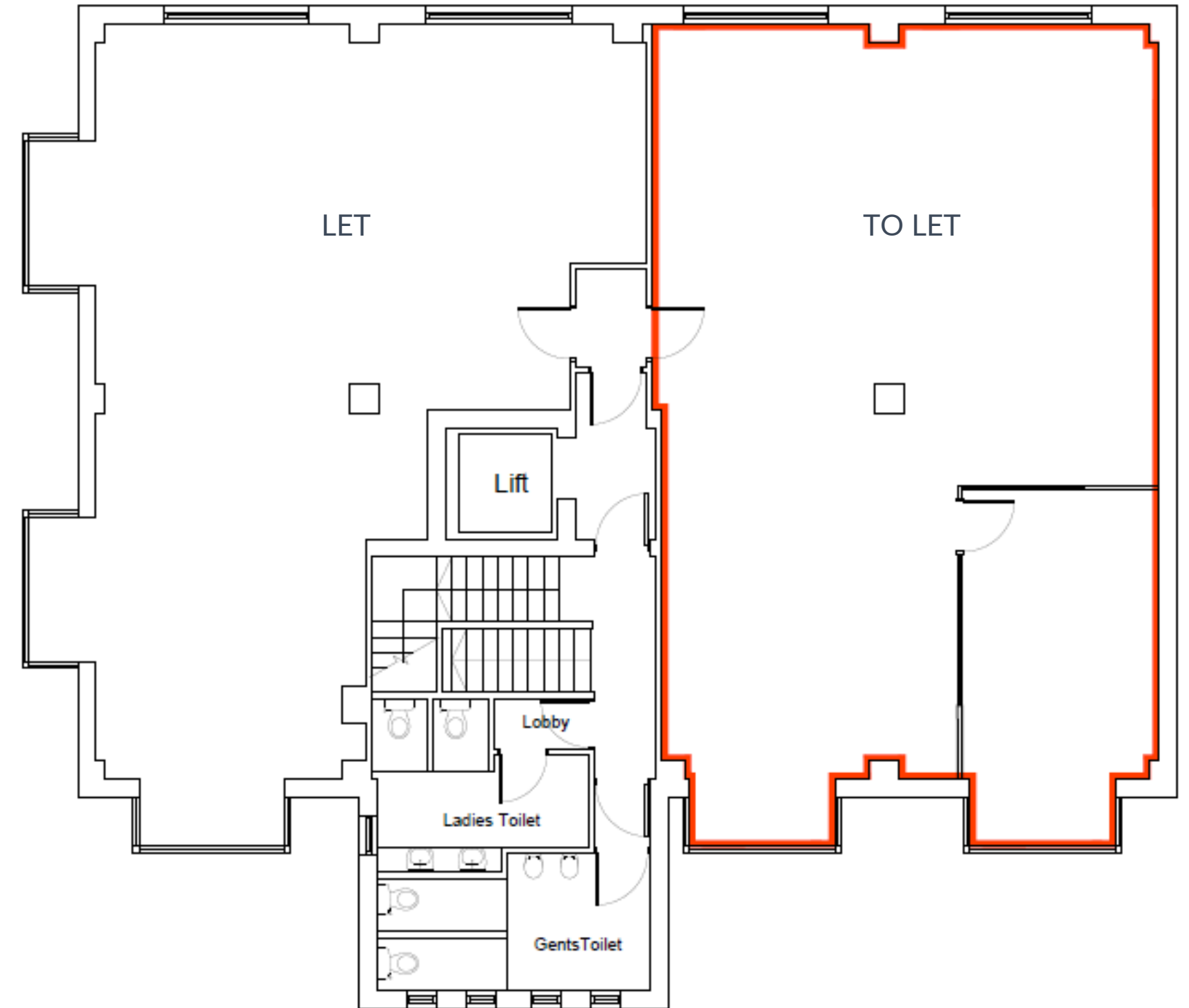
4 onsite parking spaces  
(additional nearby if required)



Entry phone system



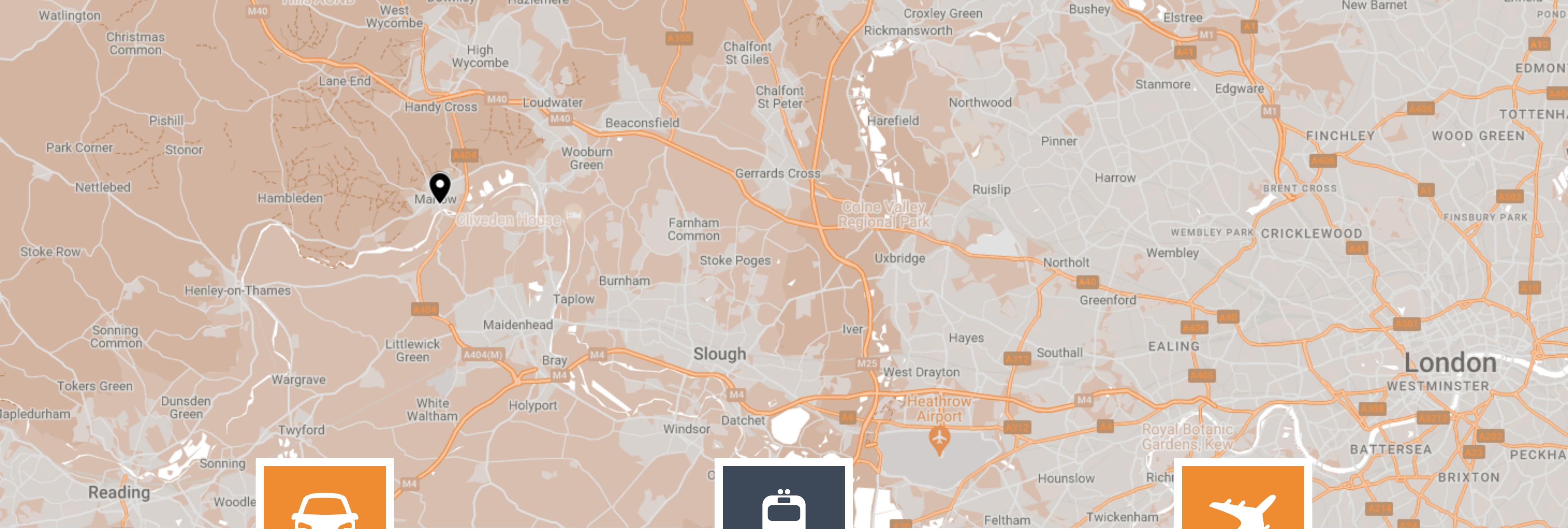
Lift



First floor







# CAR

3 MILES TO J4 OF M40

The A404 connects Marlow to J4 of the M40 in 3 miles and to J8/9 of the M4 in 6.8 miles.



# TRAIN

0.7 MILES TO MARLOW STATION

Walk to Marlow station in 14 minutes with regular services to Maidenhead where you can access the Elizabeth Line into London.



# AIRPORT

20.6 MILES TO HEATHROW AIRPORT

Worldwide connections within easy reach of Marlow.

# GET IN TOUCH



**ADRIAN DOLAN**

01494 839913  
adriand@dbk.co.uk

**LIAM ASH**

01494 450951  
liama@dbk.co.uk



**SOPHIE HOLMES**

07763 565056  
sophie@pagehardyharris.co.uk

**JAMES EMES**

01628 439006  
j.emes@pagehardyharris.co.uk

Owned and managed by:

**SORBON**  
ESTATES

For further information or to arrange an inspection please contact our agents.

Misrepresentation clause. These particulars are set out as a general outline only for the guidance of intending purchasers or lessees and do not constitute the whole or any part of an offer or contract. The information is compiled and given in good faith but without any responsibility whatsoever. Intending purchasers or tenants should not rely on them as statements or representations of fact.  
April 2026.

Please note that all images are for illustrative and indicative purposes only. Please check with your Sorbon Estates representative for more information.