



TO LET TOWN CENTRE OFFICE SUITES

DUKES HOUSE

HIGH STREET, WINDSOR, SL4 1LD

199 - 550 sq ft (18.49 - 51.09 sq m)

[WATCH VIDEO](#)



KEY INFORMATION

Suite:	sq ft:	sq m:	Rent pcm*:
8	203	18.86	£775
11 (whole)	550	51.09	£1,800
11A	211	19.6	£795
11B	199	18.49	£775

*Rent inclusive of VAT, service charge & insurance. Excludes Business Rates, WiFi and internal suite cleaning.

Lease: The suites are available on a new lease direct from the landlord.

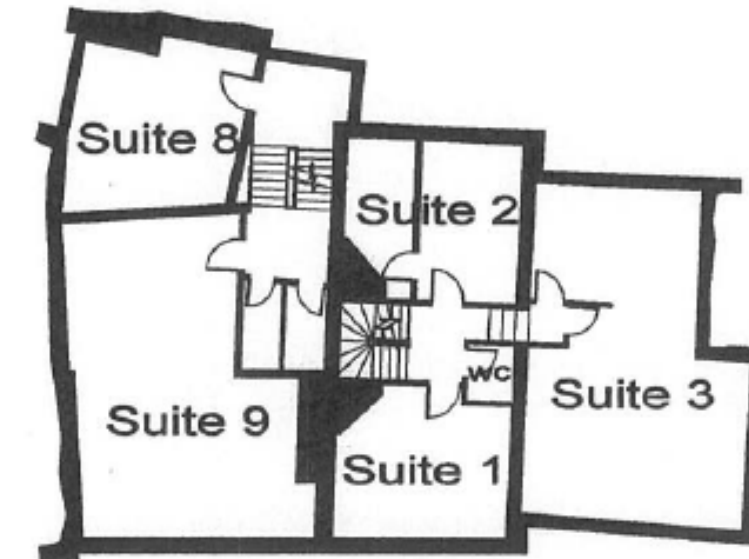
Legal Fees: Each party to bear their own costs.

DESCRIPTION

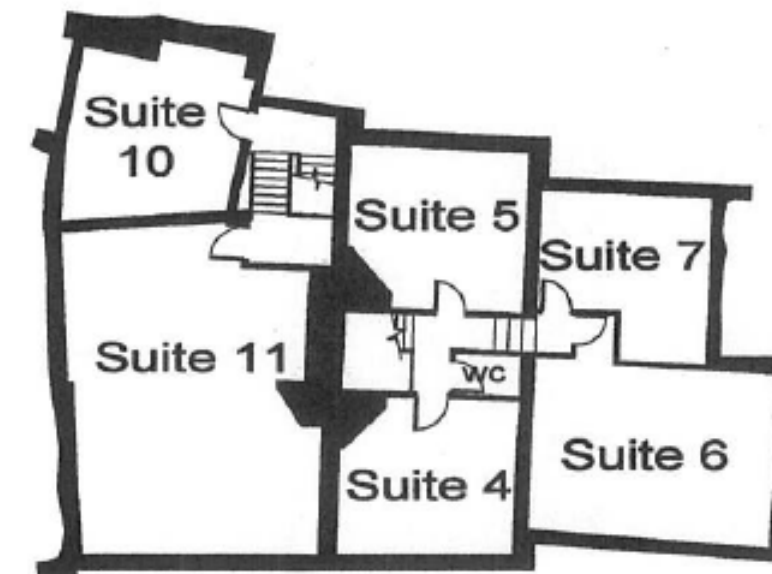
The suites have access to communal male and female toilets, and onsite parking can be arranged by way of separate licence (subject to availability).

Located on Windsor's High Street, Dukes House is in an enviable location.

FLOOR PLAN



1st Floor



2nd Floor





Suite 11A



Suite 11A



Suite 11B

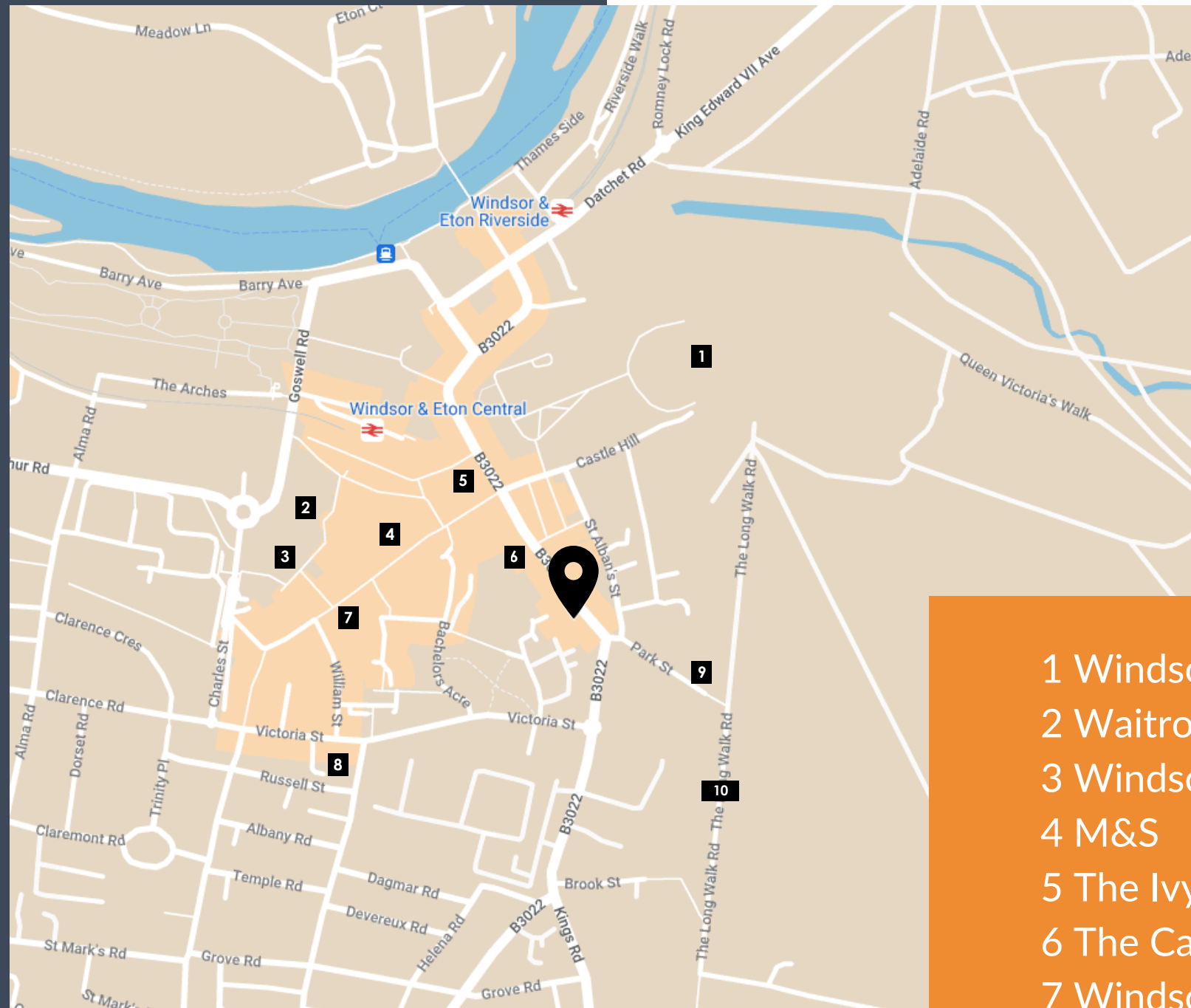


Suite 11B

LOCATION

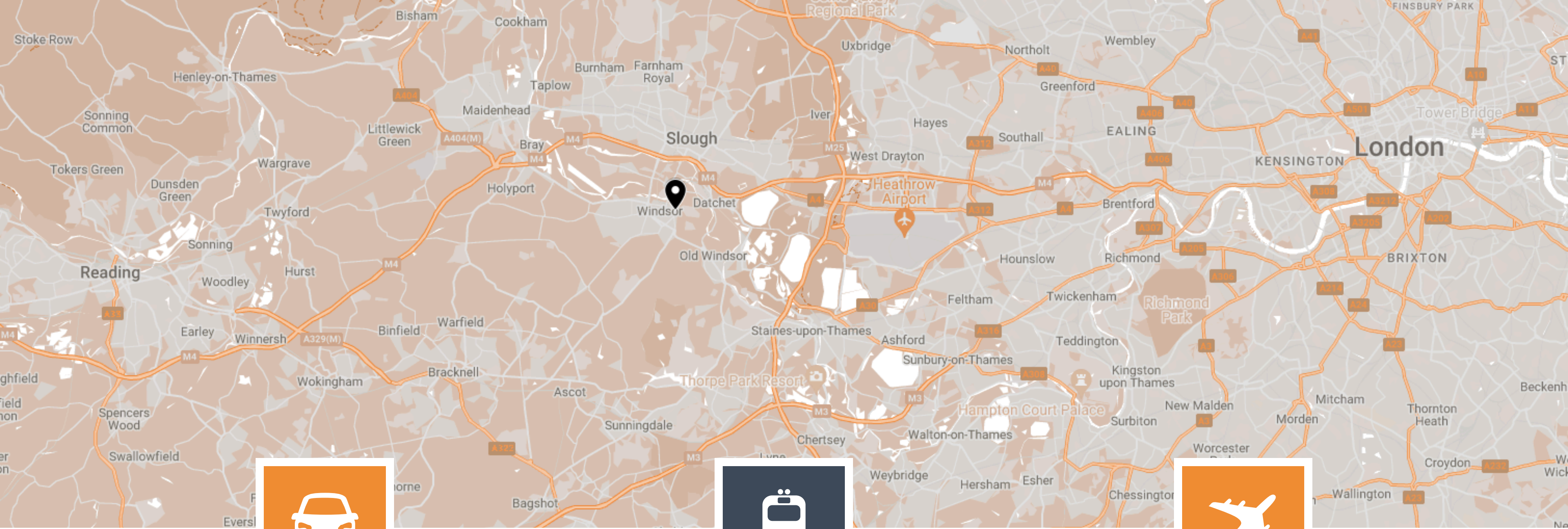
Situated in the heart of the Windsor town centre, Dukes House has an enviable array of amenities right on its doorstep, including an eclectic mix of national and independent retailers, banks, bars and restaurants.

Dukes House is a stones throw away from Windsor Castle and an easy walk to The Long Walk park giving you access to beautiful outside space.



- 1 Windsor Castle
- 2 Waitrose
- 3 Windsor Yards
- 4 M&S
- 5 The Ivy Windsor
- 6 The Castle Hotel Windsor
- 7 Windsor Post Office
- 8 Victoria Street Car Park
- 9 The Two Brewers
- 10 The Long Walk





CAR

2.7 MILES TO J6 OF M4

Join the motorway network at J6 of the M4 in under 10 minutes.



TRAIN

0.3 MILES TO WINDSOR & ETON CENTRAL

Walk to Windsor & Eton Central station in 6 minutes and Windsor & Eton Riverside in just 7 minutes.



AIRPORT

7.8 MILES TO HEATHROW AIRPORT

Worldwide connections within 15 minutes of Windsor.

GET IN TOUCH

For further information or to arrange an inspection please contact our agent.



JAMES EMES

07806 487124

j.emes@pagehardyharris.co.uk

SOPHIE HOLMES

07763 565056

sophie@pagehardyharris.co.uk

Misrepresentation clause. These particulars are set out as a general outline only for the guidance of intending purchasers or lessees and do not constitute the whole or any part of an offer or contract. The information is compiled and given in good faith but without any responsibility whatsoever. Intending purchasers or tenants should not rely on them as statements or representations of fact.

Please note that all images including Computer Generated Images (CGI's) are for illustrative and indicative purposes only and furniture is not included with the lease.

June 2026

Owned and managed by:

SORBON
ESTATES

FOLLOW US

