

# 168 HIGH STREET, BERKHAMSTED, HP4 3AP

CGI Image



## RETAIL UNIT/S TO LET

Secure a prime position on Berkhamsted's thriving high street, located in the heart of this affluent market town.

While this stretch of the high street is currently progressing through a proposed redevelopment, the ground-floor retail space will remain fully open for trade throughout.

The unit is available as a whole or can be split to meet individual retailer requirements.

— 1,000 - 3,116 sq ft  
(92.9 - 289.5 sq m)

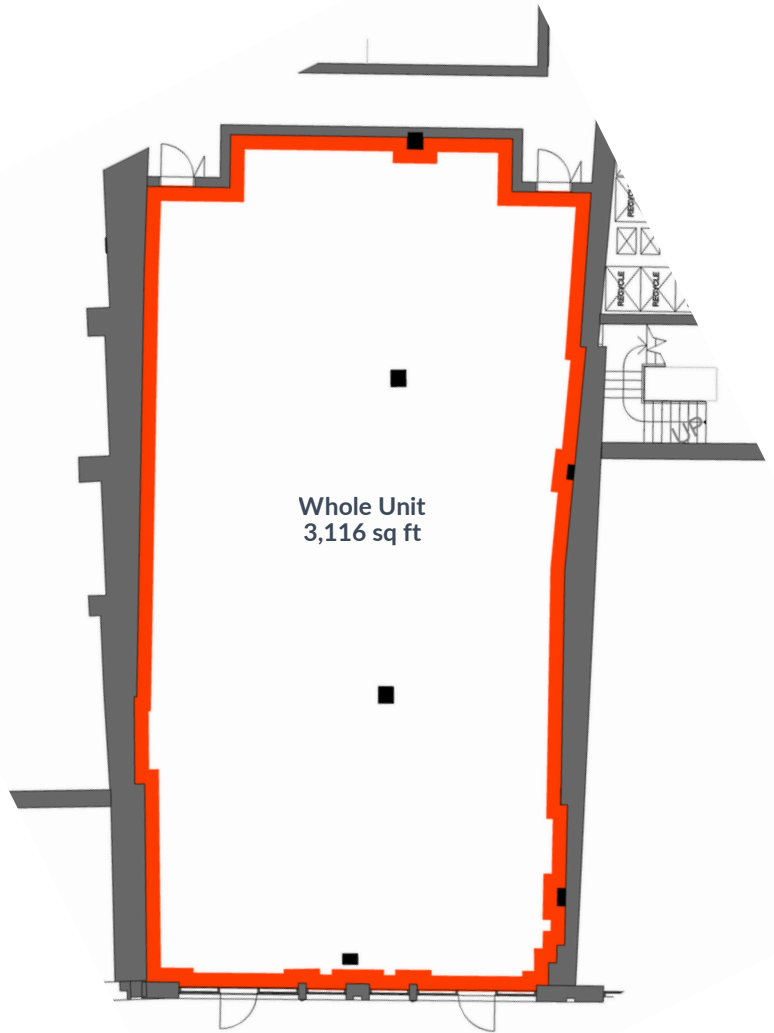
You'll be in strong company, with nearby brands including Tesco Express, Superdrug, Boots, Mint Velvet, Gail's, Crew Clothing and FatFace.

Neighbouring units are home to leading health and wellness operators such as IVBoost UK, House of Lagree and One92 Fitness.

Alongside well-known names, Berkhamsted offers a vibrant mix of independent boutiques, cafés and restaurants.

## WHOLE UNIT

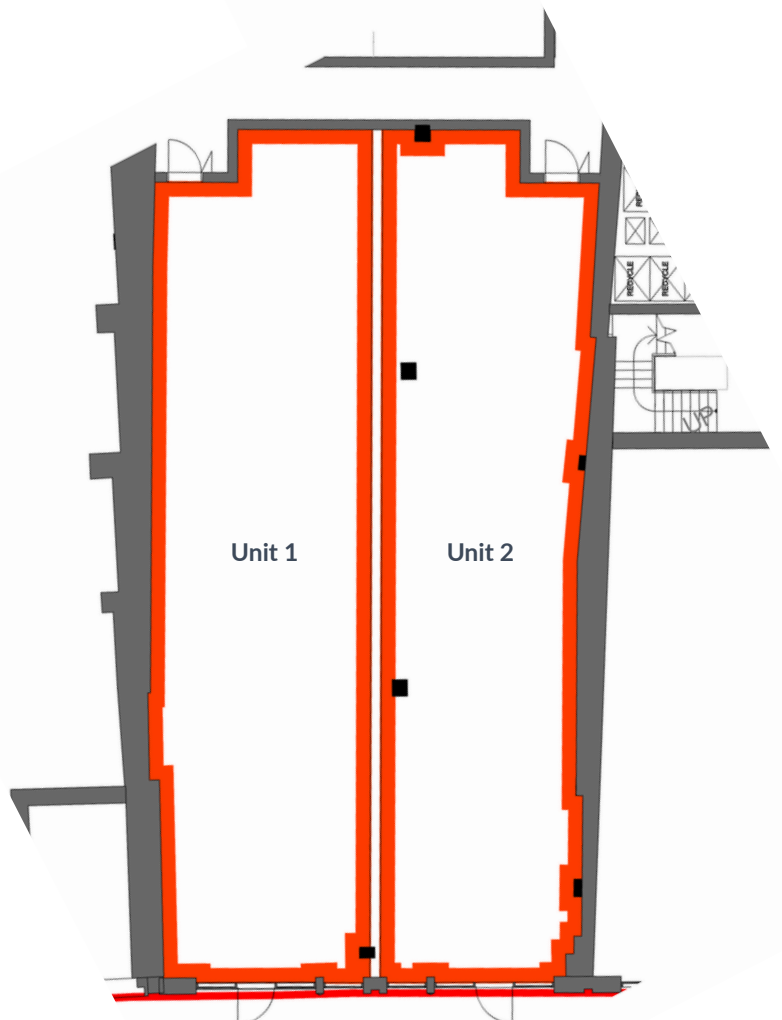
- Size: 3,116 sq ft
- Rent: £135,000 +VAT pa
- EPC: C (72)
- Class: E Use
- Level: Ground Floor



## SPLIT UNIT

Units can be split as proposed or tailored to meet retailer requirements.

- Size: 1,000 - 2,116 sq ft
- Rent: POA







## NEARBY RETAILERS INCLUDE

Waitrose



Superdrug

MINT VELVET

TESCO  
express



M&S  
SIMPLY  
FOOD

GAIL's  
BAKERY

## ARRANGE A VIEWING



DAN WALKER  
TW Keil

07967 697917  
dwalker@twkeil.com

Misrepresentation clause. These particulars are set out as a general outline only for the guidance of intending purchasers or lessees and do not constitute the whole or any part of an offer or contract. The information is compiled and given in good faith but without any responsibility whatsoever. Intending purchasers or tenants should not rely on them as statements or representations of fact.  
December 2025.

SORBON  
ESTATES